


FOR SALE

Southern
Railroad 4-6-2
Pacific
Coal Fired
Steam
Locomotive, cars,
trailer, & more



Southern Railroad 4-6-2 Pacific coal fired steam locomotive number 1407 tender, passenger cars, cabooses, transport trailer, tools, and parts.



 **COLORADO
LIVE STEAMERS**

BOILER TEST CERTIFICATE

WORKING PSI 120 HYDRO TEST PSI 180

SAFETY VALVE STEAM TEST #1 123 #2 125

BOILER MAT'L Steel YR COMP Unk FUEL Coal

SCALE 1.5" GAUGE 7.5" TYPE 4-6-2 No 1402

OWNER ERIC Gold

ADDRESS 22018 E. Costilla Dr.

EXPIRES 7/8/18 INSPECTOR WJ Maher

BACKGROUND

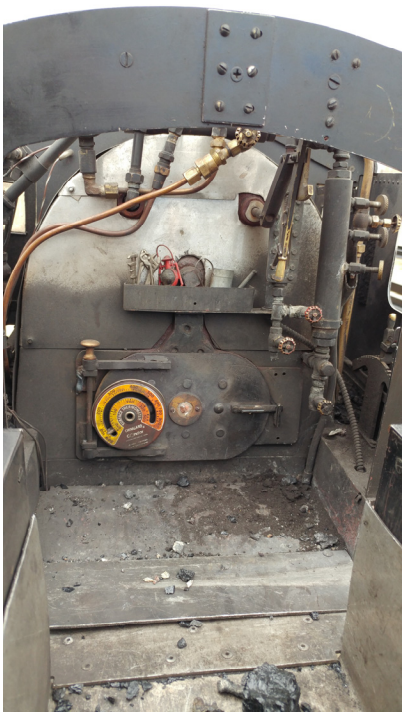
- I purchased the engine from John Lowman of Waterville Ohio in October of 2004. At that time the engine had no detailing. I added all decal lettering and lines, water pump, turbogenerator, marker lights, classification lights, decorative sand piping and builder plate.
- Engine is a fantastic runner and stunning looking engine. Engine and tender weight is approximately 975 pounds empty. Last fired spring 2017.
- Engine is in Colorado.
Summer at Colorado Live Steamers www.coloradolivesteamers.com.
Winter in Aurora (Denver), CO, heated garage.
- Boiler age 1985, construction unknown
- Water Capacity: approximately 25 gallons in the engine and 35 gallons in the tender.
- Builder: unknown
- Boiler Certification: current to July 8, 2018.
- Operating pressure: 120 PSI





ENGINE

- Fully detailed with gold lines and lettering, engine and railroad name, line and numbers. Including gold lines on wheel spokes
- Soler II dual piston steam operated feed water pump mounted to look like air compressor
- Superscale water injector
- Axle water pump
- Automatic cylinder cocks
- Large horizontal 4 chime whistle mounted to look like air tank
- Original Moseley Turbogenerator. Pyle National Type MO-6. FULLY FUNCTIONAL! Powers the locomotive head light.
- Lighting: headlight powered by turbogenerator, cab lights powered by battery, caboose marker lights powered by battery
- Electric bell. Custom made digital recording of a steam locomotive bell. Powered by battery. Switch on tender facing cab. Speaker mounted to first passenger car.
- Superscale safety valves set at 123psi and 128psi
- Start up draft via compressed air connection
- One blow down valve also functions as an input for initial water
- Steam operated brakes on all 6 drive wheels



MAJOR REPAIRS

- 6 drive wheels, Steel tires added approximately 2011 by Jay McClelland Custom Machine Shop 303-717-4662 jaymcclelland@msn.com
- Axel pump. Rebuilt approximately 2012 by Jay McClelland Custom Machine Shop 303-717-4662 jaymcclelland@msn.com
- New fire grates summer 2013
- Replaced throttle valve. Summer 2016

CARS

- Two Vintage passenger cars hold 4 persons each
- Wooden Caboose
- All Manufactured by Mountain Car Company www.mountaincar.com

TRAILER

- 2002 US Cargo utility trailer. 5 sets of track installed. Holds engine, tender and all 3 cars.

TOOLS/PARTS/FUEL

- Approximately 15 foot long steel rolling rack for transferring or working on engine or cars
- Transfer plates
- Bags of Pocahontas coal
- Significant quantity of tools, paint and spare parts. Too much to list. All kept in a large multi section and multi drawers rolling tool kit.

FOR QUESTIONS OR INTEREST PLEASE CONTACT:

Eric J. Gold
Egold5280@gmail.com
 303-564-8500

